

Nozzles

Single/Multi-Orifice, 90-Degree, 90-Degree Multi-Orifice

Application the way you want it.

Valco Melton manufactures a large variety of Valco Melton nozzles for adhesive applications. Single orifice, multi-orifice, 90-degree, and 90-degree multi-orifice are some of the most common types.

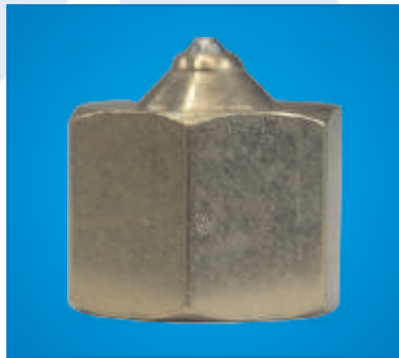
All Valco Melton nozzles are machined from a brass body and have a stainless insert. These inserts are formed from medical grade polished capillary tubes which provides the highest quality channel from which the adhesive can be extruded. These nozzles will provide a straight, consistent and accurate adhesive bead. All Valco Melton nozzles have a 3/8-24 female thread. The 90-degree nozzles are constructed of a brass housing, steel retaining nut, and stainless steel nozzle insert.

Valco Melton Nozzles Feature:

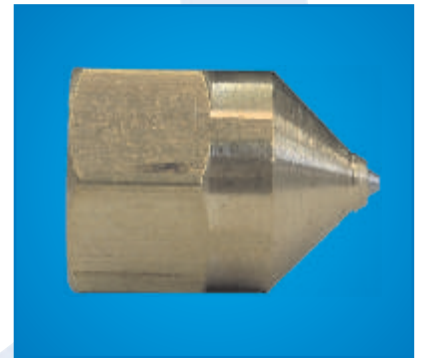
- Medical Grade Capillary Tube nozzle inserts supply the best possible adhesive flow and pattern.
- Brass housing provides optimal heat transfer throughout nozzle.
- Crimping method used in assembly provides greater uniformity and consistency.



Insert



Short
Engagement



Long
Engagement



Dual Orifice 90°
(15° Spread)



Dome Multi
Orifice Nozzle



Single
Orifice 90°